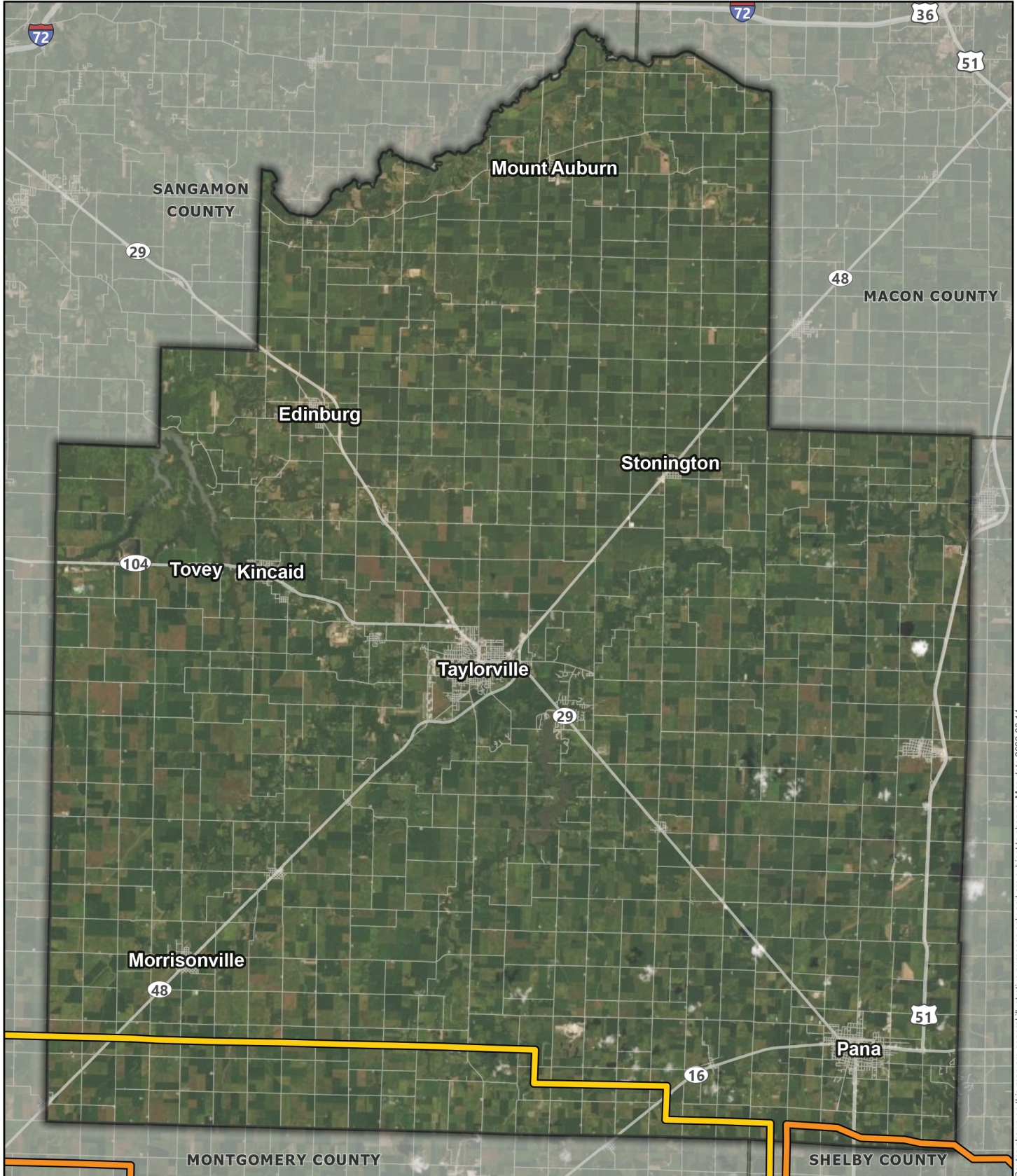


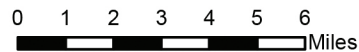
The general pathways of the Primary and Alternate routes currently under consideration are depicted on the map. You will note that the Alternate Route on which we are now focused incorporates what was previously labeled the "updated Alternate Route segments" during our Phase 2 meetings. More detailed maps will be available for review during the Phase 3 public meeting, which in some cases, depict minor adjustments under consideration to the routes that are too small to display accurately on the enclosed overview maps. Grain Belt staff will be available to discuss those (and all other) adjustments under consideration at the Phase 3 public meeting. **The Primary Route is Invenergy Transmission's preferred route for the project.**



Routes shown on this map are general illustrative purposes only and are subject to change. Map date 2022-03-14

Christian County

▬ Primary Route
 ▬ Alternate Route



The Primary and Alternate Routes currently under consideration are depicted on the map. You will note that the Alternate Route on which we are now focused incorporates what was previously labeled the "updated Alternate Route segments" during our Phase 2 meetings.



Christian County

- Primary Route
- Alternate Route
- Neighboring States Route
- Primary and Alternate Route shared alignment